



ANNUAL GIVING CAMPAIGN

ALL TOGETHER | ALL IN

The Annual Giving Campaign is your investment in the people and programs that make FWC excellent. Your tax-deductible gift support our commitment to provide competitive salaries for our faculty, innovative technology for a dynamic learning environment, and need-based scholarships. Your generosity advances our mission of being a Christ-centered, college preparatory school where every student is known, loved, and valued, taught excellence in and out of the classroom, and empowered by a biblical worldview. This is an opportunity to make a difference each year in the educational experience at Fort Worth Christian.

ALL TOGETHER | ALL IN

THE ANNUAL GIVING CAMPAIGN FAMILY OF FUNDS

We have three primary goals for the Annual Giving Campaign:

- Support our FACULTY FUND for competitive salaries
- Support our TECHNOLOGY FUND for an innovative and dynamic learning environment
- Support our NEED-BASED SCHOLARSHIP FUND for mission-fit students who have demonstrated financial need

Our Area of Greatest Need Fund will support our goals for faculty, technology and scholarships.

It would be our pleasure to personally visit with you about the Annual Giving Campaign and our Family of Funds or other areas you may like to support.

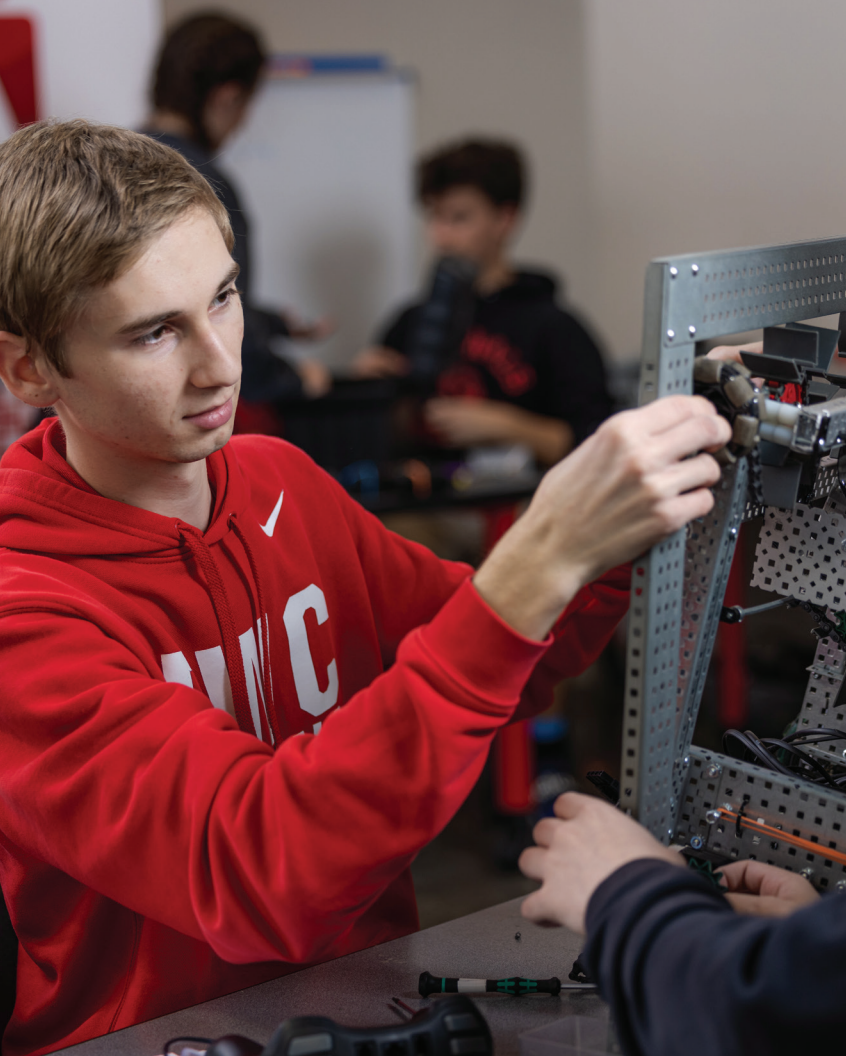
Please contact Assistant Head of School Kinch Cato at kcato@fwc.org or 817-520-6534 to schedule a visit.



FACULTY FUND:

Our faculty are the key to our mission. They know, love, and value our students. They teach with excellence in and out of the classroom. They empower our students with a biblical worldview for a lifetime of faith, service, and leadership for Christ. They inspire students to be both self-directed and collaborative learners and curious problem solvers. They help students spread their wings and strive for excellence. They encourage students to maximize their God-given abilities and be all that God created them to be.

Your gift to the Faculty Fund is an investment in our faculty and enables us to attract and retain outstanding faculty by providing competitive salaries, on-going training, and professional development.



TECHNOLOGY FUND:

In our ever-changing world, continued enhancements to technology is a key ingredient in providing an innovative and dynamic learning environment. In both classroom and online learning platforms, technology is essential for communication, collaboration, creativity, critical thinking, and curiosity.

Your gift to the Technology Fund is an investment in technology integration for an innovative and dynamic learning environment.



SCHOLARSHIP FUND:

A vital part of our mission is to provide need-based scholarships to mission-fit students who have demonstrated financial need and desire to be part of our Christ-centered, college preparatory school.

Your gift to the Scholarship Fund support need-based scholarships for qualified students.



FREQUENTLY ASKED QUESTIONS

About the Annual Giving Campaign

Why does the school ask for an annual contribution to the Annual Giving Campaign?

FWC is committed to keeping tuition at a competitive level. Simply put, the Annual Giving Campaign enables FWC to do more than just what tuition provides. Whether it be additional support to attract and retain outstanding teachers, continued technology enhancement, or additional need-based scholarship support, your Annual Giving support gift makes a difference each and every year. It also provides you an opportunity to receive an income tax deduction for your charitable gift to FWC to the extent allowed by law.

How is my Annual Giving support different than supporting the auction?

Support for the Annual Giving Campaign and the auction are both important and appreciated. However, they are designed differently and typically serve different purposes and have different benefits. Annual Giving Campaign gifts are tax deductible and there are no goods or services provided in exchange for the gifts. Participation is key in Annual Giving and and we ask all constituent groups (teachers, trustees,

parents, etc.) to participate. Annual Giving is currently targeting three specific impact areas: faculty, technology and scholarship. The auction is both a fundraising and community building event that typically involves ticket purchases, sponsorships, a silent and live auction, and a student-impact appeal. Both are important, but they are constructed differently.

If I support the Booster Club, a capital project, purchase an advertisement, or support another area, will I still be asked to make an Annual Giving gift?

We do ask everyone to consider supporting the Annual Giving Campaign. As the name indicates, it is "annual" and helps us fund specific needs that impact our teachers and students. High participation numbers enable us to approach foundations that measure our culture of philanthropy on our Annual Giving participation.

How will I be asked to give and when will this appeal occur?

The school will make an appeal to you early in the school year asking for your support of the Annual Giving Campaign. We ask you consider making a gift or pledge of support soon after receiving this first appeal. If you do choose to make a pledge at this time, it may provide you the opportunity to give more

than you first anticipated by spreading out the pledge payments over a longer time period. Our goal is for all pledges to be made by commitment week (typically in October).

Is it important for me to participate in the Annual Giving Campaign even if I am not able to make a large donation?

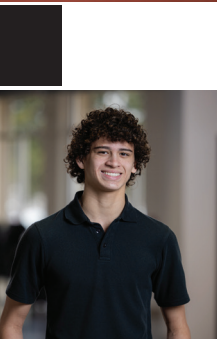
We want everyone to join us in support, no matter the gift amount. Our desire is for gifts of equal sacrifice not equal amounts.

What are the ways I can make a gift?

Gifts can be made by check, bank draft, credit card, stock, or matching gifts. Gifts can be made online at fwc.org/makeagift

Can I pledge a gift and pay in installments?

Gifts can be pledged and paid in installments. A monthly pledge enables you to spread out your payments and possibly give a larger gift.



LEADERSHIP LEVEL GIVING

Each year FWC recognizes the leadership donors who have given at the highest levels during the school year. FWC is grateful for this generosity that is essential in advancing the school's mission. We welcome opportunities to develop closer relationship with these supporters and the school.

LEADERSHIP GIVING AT FWC IS RECOGNIZED AT FOUR LEVELS:

BENEFACTORS \$10,000 and up **AMBASSADORS** \$2,500 – \$4,999

PARTNERS \$5,000 – \$9,999 **MEMBERS** \$1,000 – \$2,499

Recognition is based on the total amount of gifts and pledge payments made in the fiscal year (Aug 1 – July 31).

MONTHLY LEADERSHIP GIFT TABLE FOR 10 MONTHS

MONTHLY AMOUNT		MONTHS		TOTAL GIFT
\$100	x	10	=	\$1,000
\$250	x	10	=	\$2,500
\$500	x	10	=	\$5,000
\$1,000	x	10	=	\$10,000

These donors exemplify the selfless commitment and dedication of those who have built Fort Worth Christian into the outstanding institution it is today, and those who want to preserve and continue our mission for tomorrow. This steadfast support of the school is perpetuated annually through leadership giving.

We are truly grateful for the vision and loyalty of these outstanding FWC supporters!



fwc.org/makeagift

Tel: 817-520-6534 • 6200 Holiday Lane • North Richland Hills, TX 76180

